



Office
International
de l'Eau
PARIS



International
Network of
Basin
Organisations

Steps for developing Basin Organisation (BO)

Moscow, 18 May 2017



Pierre Henry de Villeneuve
Head of Unit water policy in EU
neighbouring area

**International Office for Water
Permanent Technical Secretariat
of International Network of Basin
Organizations (INBO)**



Office
International
de l'Eau
PARIS

Historical examples of basin organisation development



International
Network of
Basin
Organisation

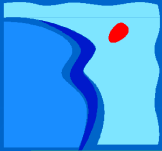
1- Development of first generation of basin organisations in charge of management of water works:

In Spain in the 30s for quantitative management including water sharing mechanism

In Romania in the 50s and other countries at that time in Soviet Union

2- This has influence the development of a new type of basin organisations born in the 60s in France

In charge to draw the way of a balanced water policy at basin scale and insure its financing

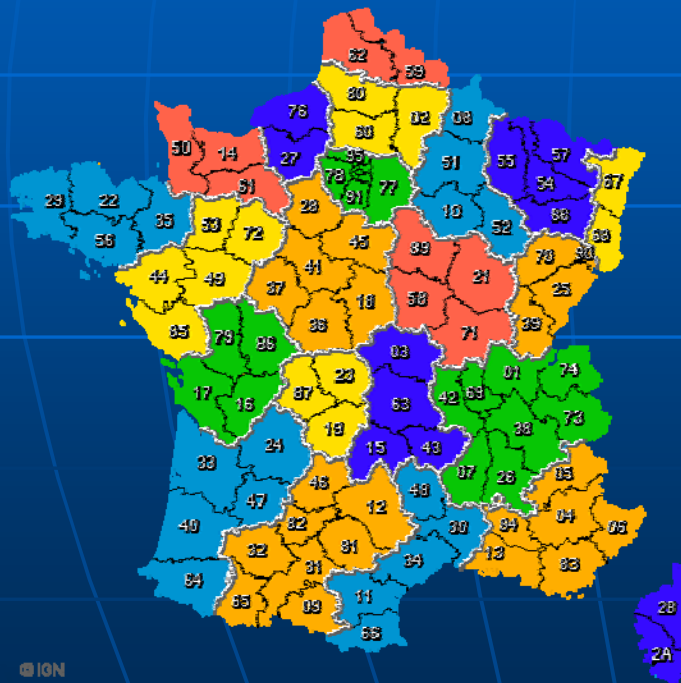


Creation of 6 basin organisations for IWRM in France from 1964



Office International de l'Eau PARIS

65 millions inhabitants
26 regions,
101 "departments",
36 700 communes

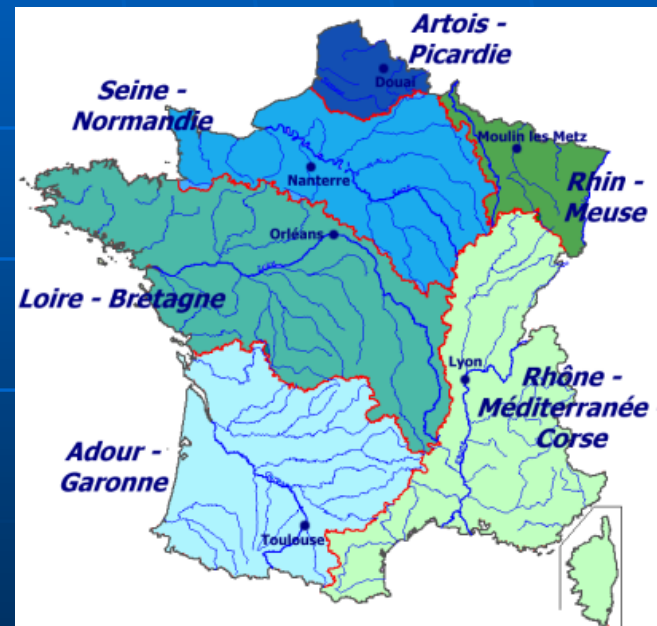


© ION



International Network of Basin Organisation

6 river Basin
6 Water Agencies
6 Basin Committees
(+ corsica&oversea)





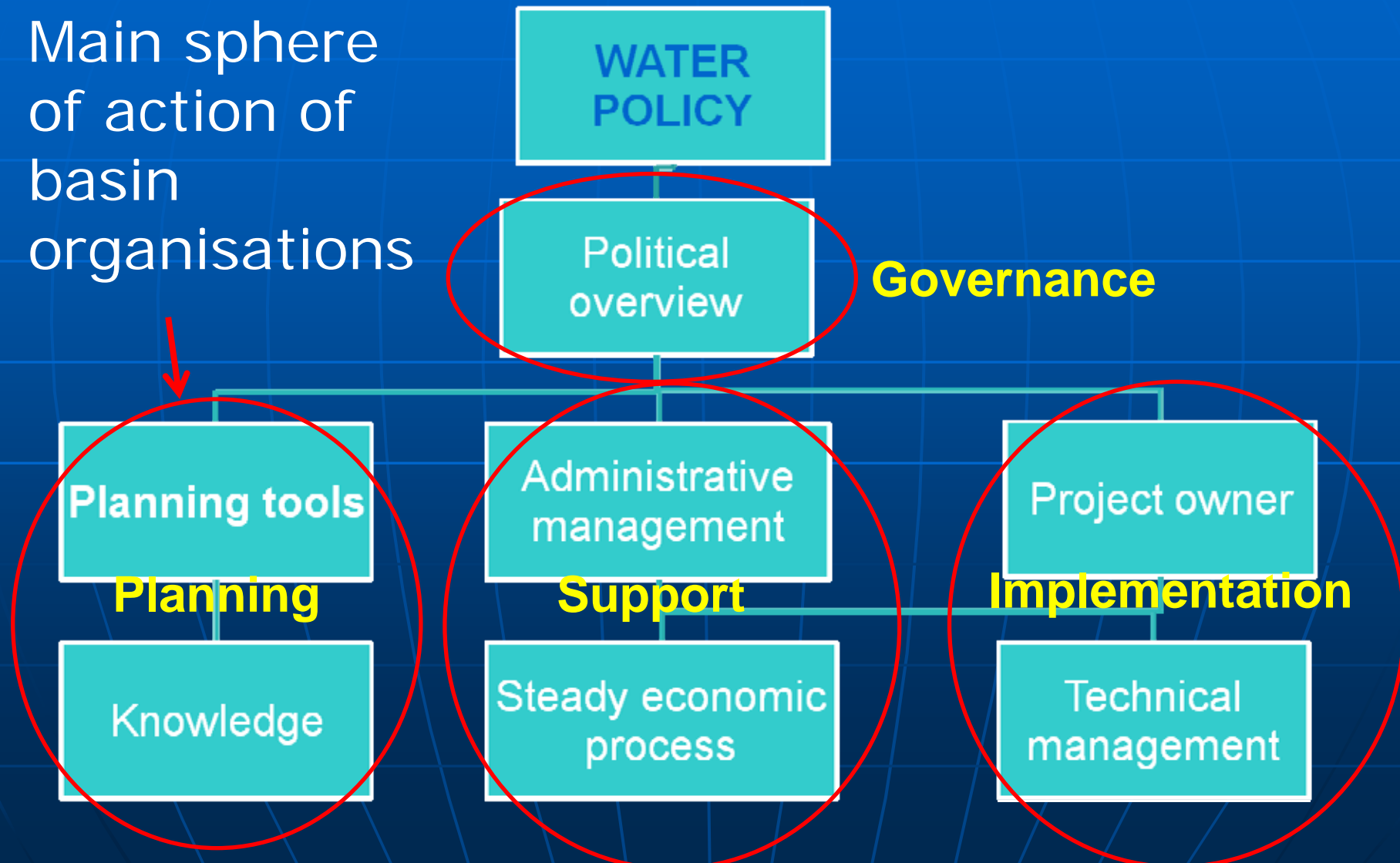
Office
International
de l'Eau
PARIS

sphere of action of basin organisations



International
Network of
Basin
Organisation

Main sphere
of action of
basin
organisations





Large basin

Local



Office International de l'Eau PARIS

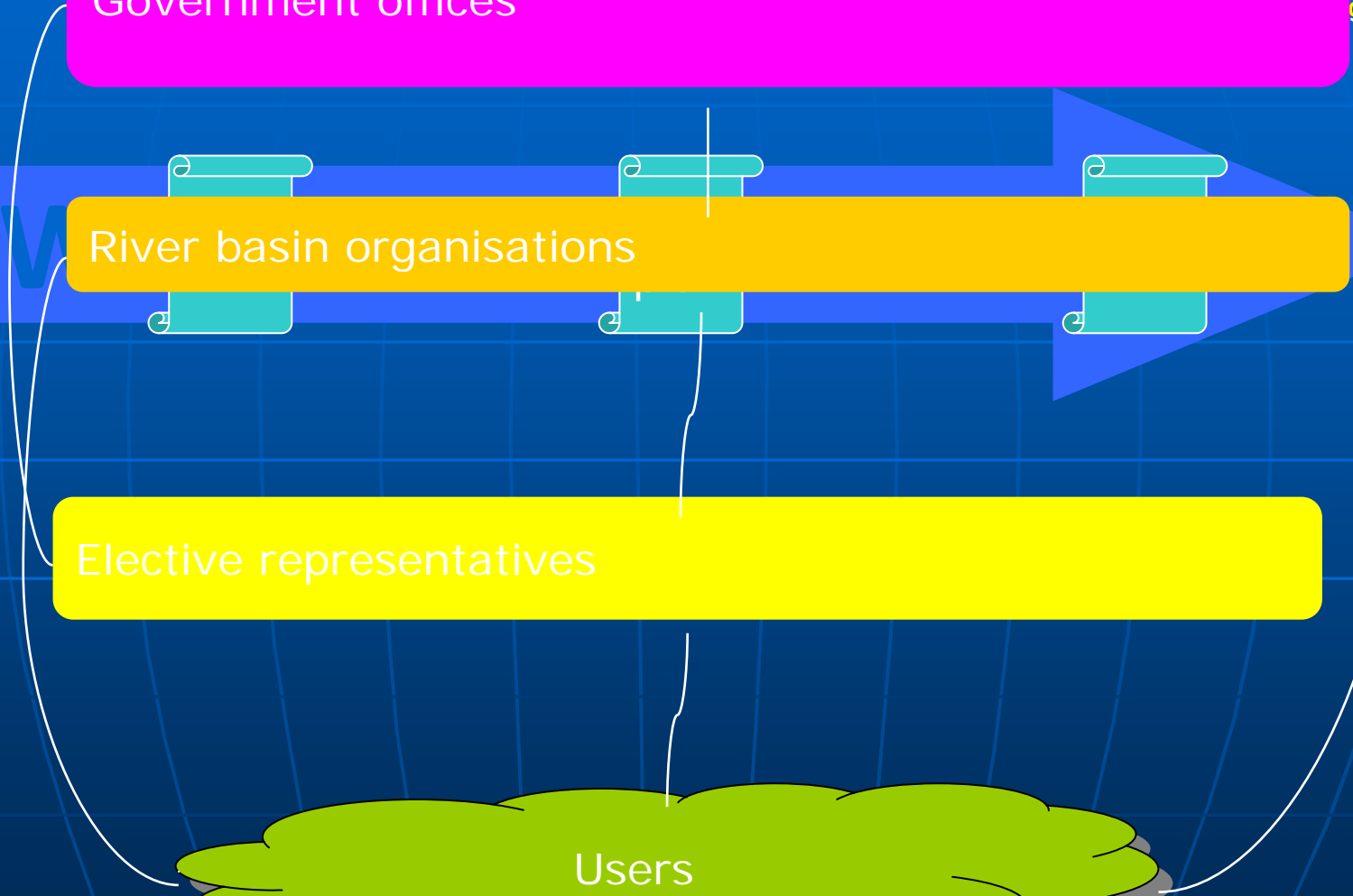
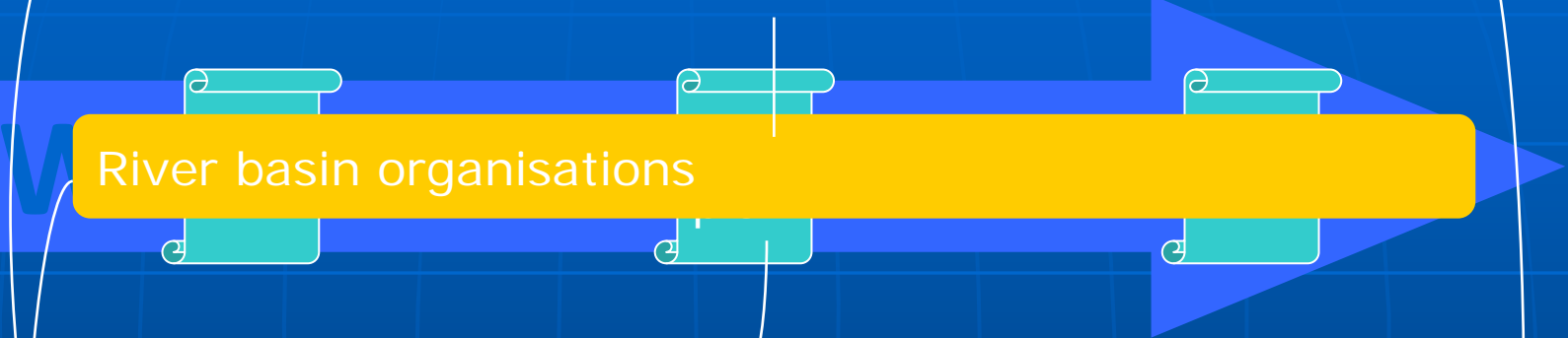
International Network of Basin Organisation

Government offices

River basin organisations

Elective representatives

Users





Office International de l'Eau PARIS

NATIONAL

BASSIN

LOCAL



International Network of Basin Organisations

Min. Budget

Min. Health

Min. Agriculture

Min. Env.

Prefet region

Region services

Prefet department

Department services

Water police
Checking

WFD

laws

Basin committee

master plan

Water commission

Water nat. committee

Water agency

Local water commission
Water com. secretariat

Nat. Elective assemblies

local elective assemblies
region department communes

Water supply
Sanitation
Land managnt

European Elective assemblies

Users: households, farmers, industrialists

CROSS-CUTTING APPROACH



€

€

€

€





Office
International
de l'Eau
PARIS



International
Network of
Basin
Organisation

Main functions to focus on?





Office
International
de l'Eau
PARIS



International
Network of
Basin
Organisation

Compatible additional functions?

Permitting

Allocation

But keeping a good balance with coordination function

Equipment

Public interest water works in transitional period



National team

Support teams in sub-basins



International Network of

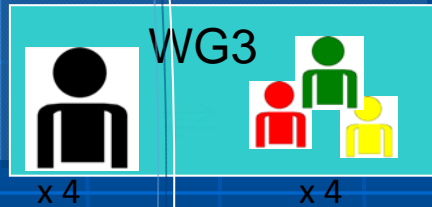
Office International de l'Eau de Paris
WRM animator
Working Group 1 (WG1)
= steering WG



Information management



RBMP preparation in districts



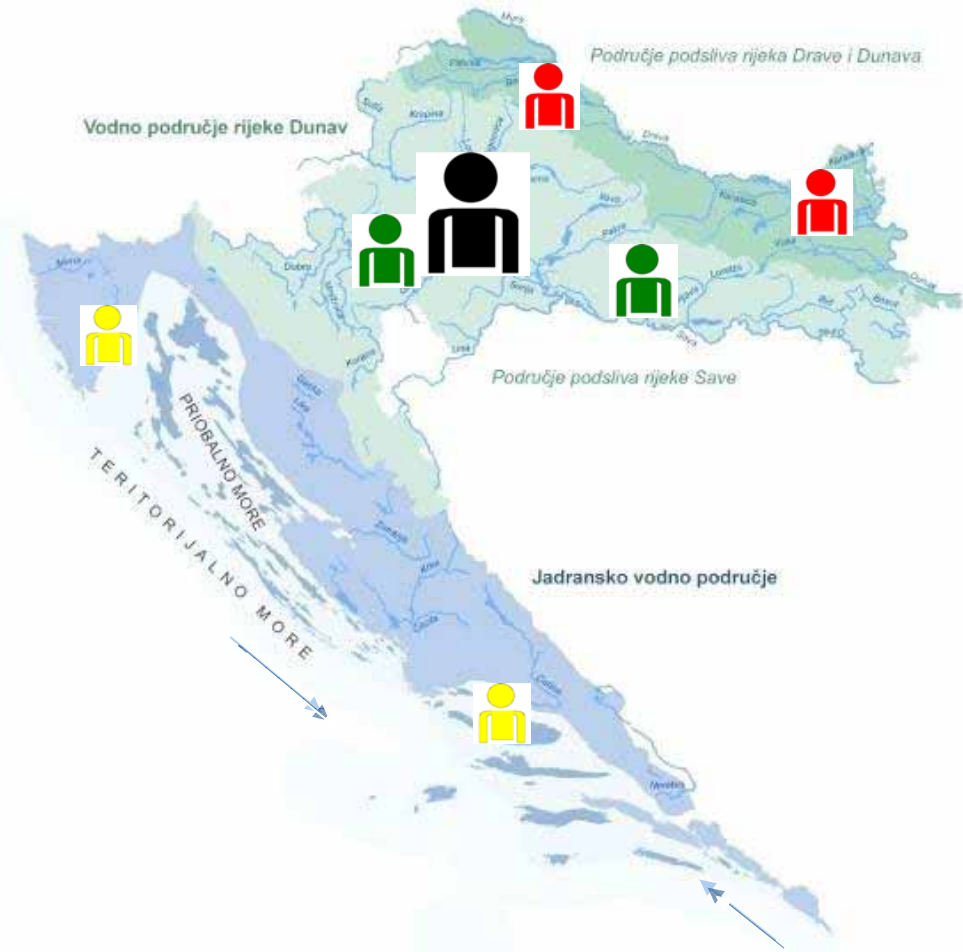
Monitoring



Communication stakeholder involvement



Risk management





Large basin
Team in

Support tem in
sub-basins



International
Network of
Basin
Organisation

Office
International
de l'Eau
PARIS

RBOs

WRM animator
Working Group 1 (WG1)
= steering WG

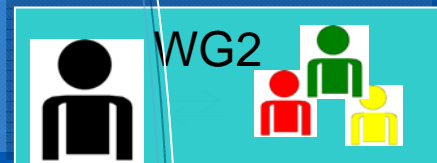
Information
management

RBMP preparation in
districts

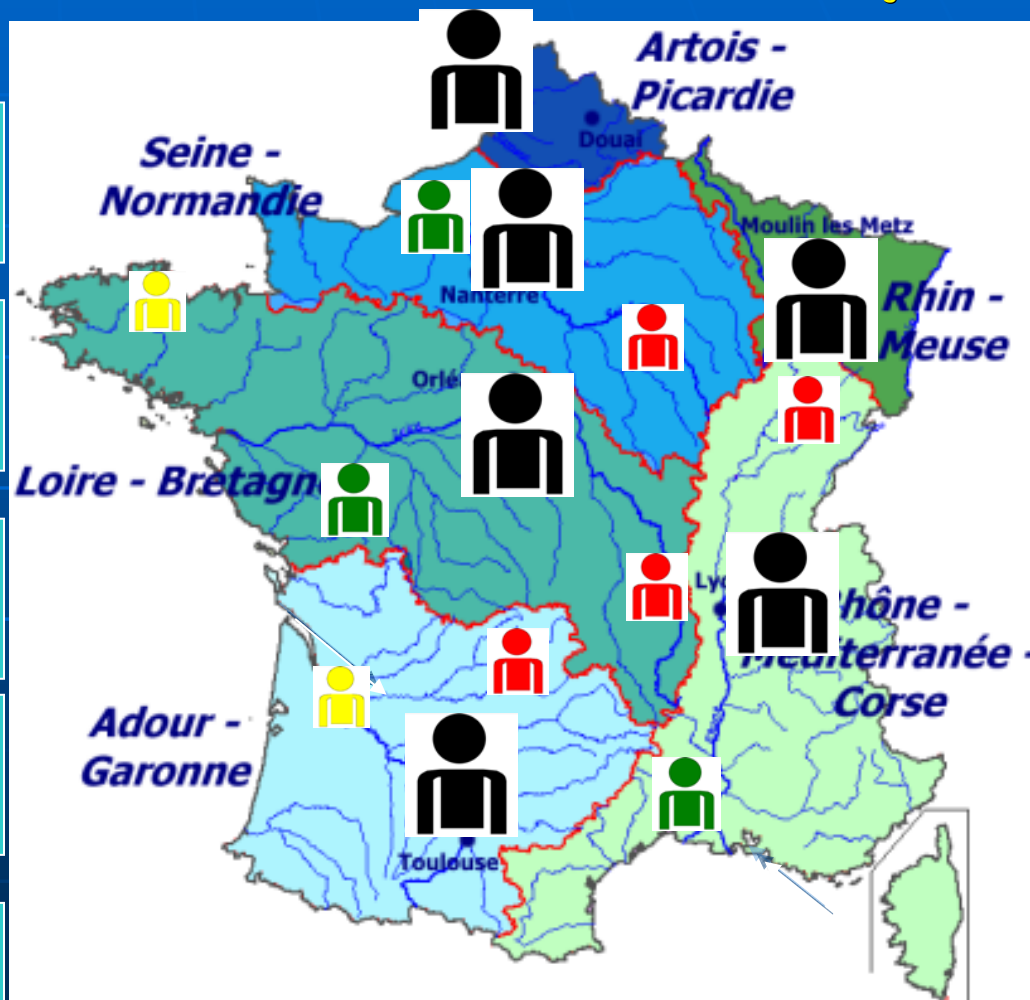
Monitoring

Communication
stakeholder
involvement

Risk management



x 4 x 4





Office
International
de l'Eau
PARIS

Cost estimate of a 10 persons RBMP team in EECCA



International
Network of
Basin
Organisation

1- Labour cost per year: 15 000 €

2- Investment and running cost annualised: 15 000 €

Total : 30 000 €/year

Very low compare to the benefit of better decision
making at basin scale!



Office
International
de l'Eau
PARIS



International
Network of
Basin
Organisations

Governance improvement need to be organised and financed!



Basin Organisations is an efficient tool to link and enhance sectoral policies!



Office
International
de l'Eau
PARIS



International
Network of
Basin
Organisation

Thank you for your attention



p.henry-de-villeneuve@oieau.fr
www.oieau.fr
www.riob.org